

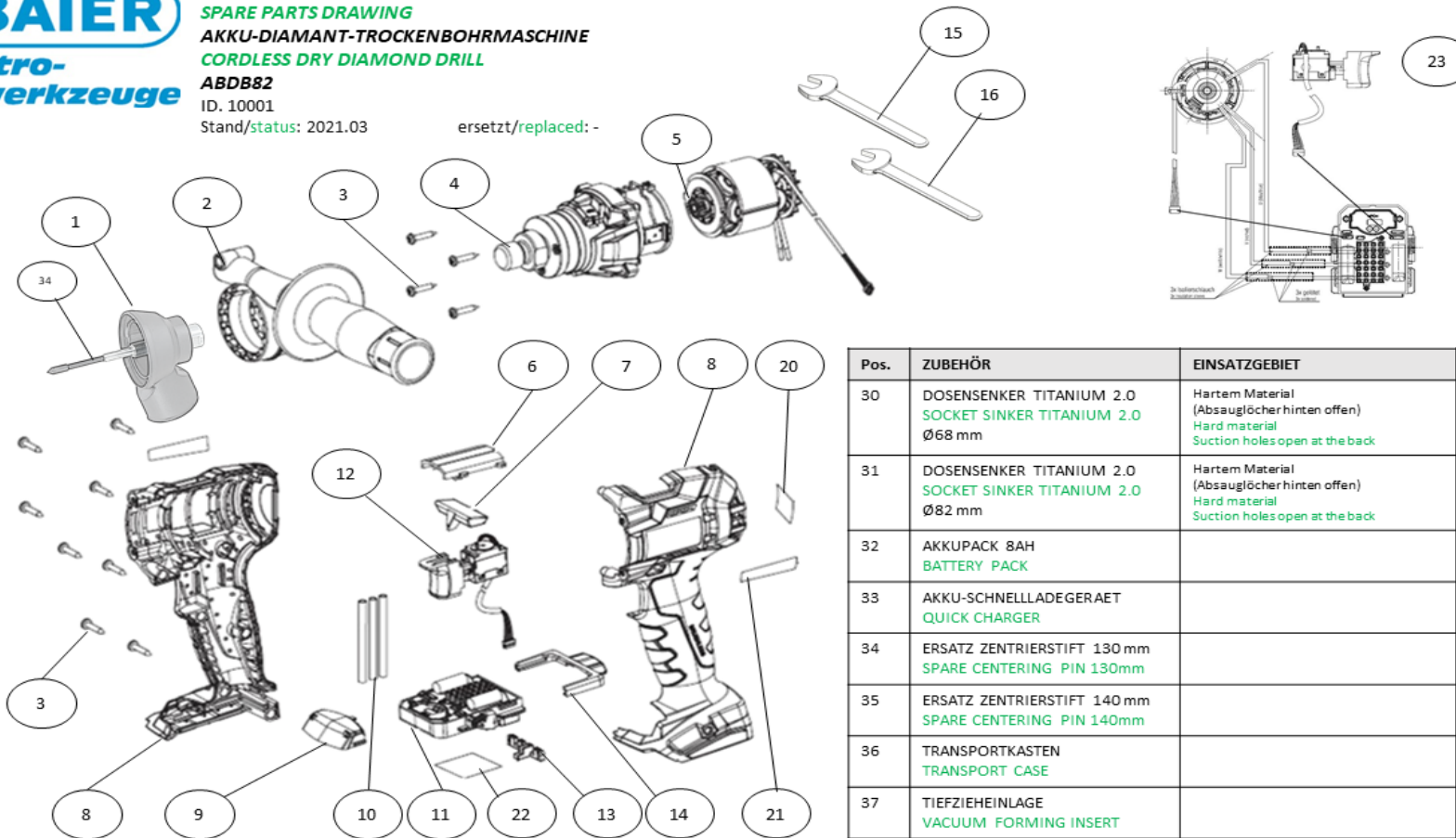


ABDB82  
cordless dry coring  
socket sinker  
ID-Nr.: 10001

status: 2021.03  
replaced: -

POS	IDNR	ME	DESCRIPTION	qty
1	9652	1	DUST SUCTION ADAPTER	1
2	10109	1	ADDITIONAL HANDLE	1
3	10103	12	PAN HEAD TAPPING SCREW	12
4	10104	1	GEAR COMPLETE M18	1
5	10110	1	MOTOR COMPLETE	1
6	10102	1	BLIND SLIDE	1
7	10101	1	GEAR SLIDE	1
8	10111	1	HOUSING WITH COVER	1
9	10098	1	COVER CAP WITHOUT ADJUSTING WHEEL	1
10	10097	3	INSULATION HOSE	3
11	10112	1	ELECTRONICS	1
12	10096	1	DC SWITCH COMPLETE	1
13	10099	1	INSERT	1
14	10100	1	LOCKING SLIDE BLACK	1
15	44610	1	WRENCH SW24	1
16	10153	1	WRENCH FLAT SW24	1
20	10107	1	INFORMATION SIGN	1
21	10106	2	TYPE LABEL	2
22	10105	1	RATING PLATE	1
23		1	WIRE PLAN	1
30	10015		SOCKET SINKER TITANIUM Ø68 mm	
31	10016		SOCKET SINKER TITANIUM Ø82 mm	
32	9997		BATTERY PACK 8Ah	
33	9998		QUICK CHARGER	
34	9651		SPARE CENTERING PIN 130mm	
35	10146		SPARE CENTERING PIN 140mm	
36	9995		TRANSPORT CASE	
37	10061		VACUUM FORMING INSERT	

ersetzt/replaced: -



Pos.	ZUBEHÖR	EINSATZGEBIET	ID-NR.
30	DOSENSENKER TITANIUM 2.0 SOCKET SINKER TITANIUM 2.0 Ø68 mm	Hartem Material (Absauglöcher hinten offen) Hard material Suction holes open at the back	10015
31	DOSENSENKER TITANIUM 2.0 SOCKET SINKER TITANIUM 2.0 Ø82 mm	Hartem Material (Absauglöcher hinten offen) Hard material Suction holes open at the back	10016
32	AKKUPACK 8AH BATTERY PACK		9997
33	AKKU-SCHNELLLADEGERAET QUICK CHARGER		9998
34	ERSATZ ZENTRIERSTIFT 130 mm SPARE CENTERING PIN 130mm		9651
35	ERSATZ ZENTRIERSTIFT 140 mm SPARE CENTERING PIN 140mm		10146
36	TRANSPORTKASTEN TRANSPORT CASE		9995
37	TIEFZIEHEINLAGE VACUUM FORMING INSERT		10061

